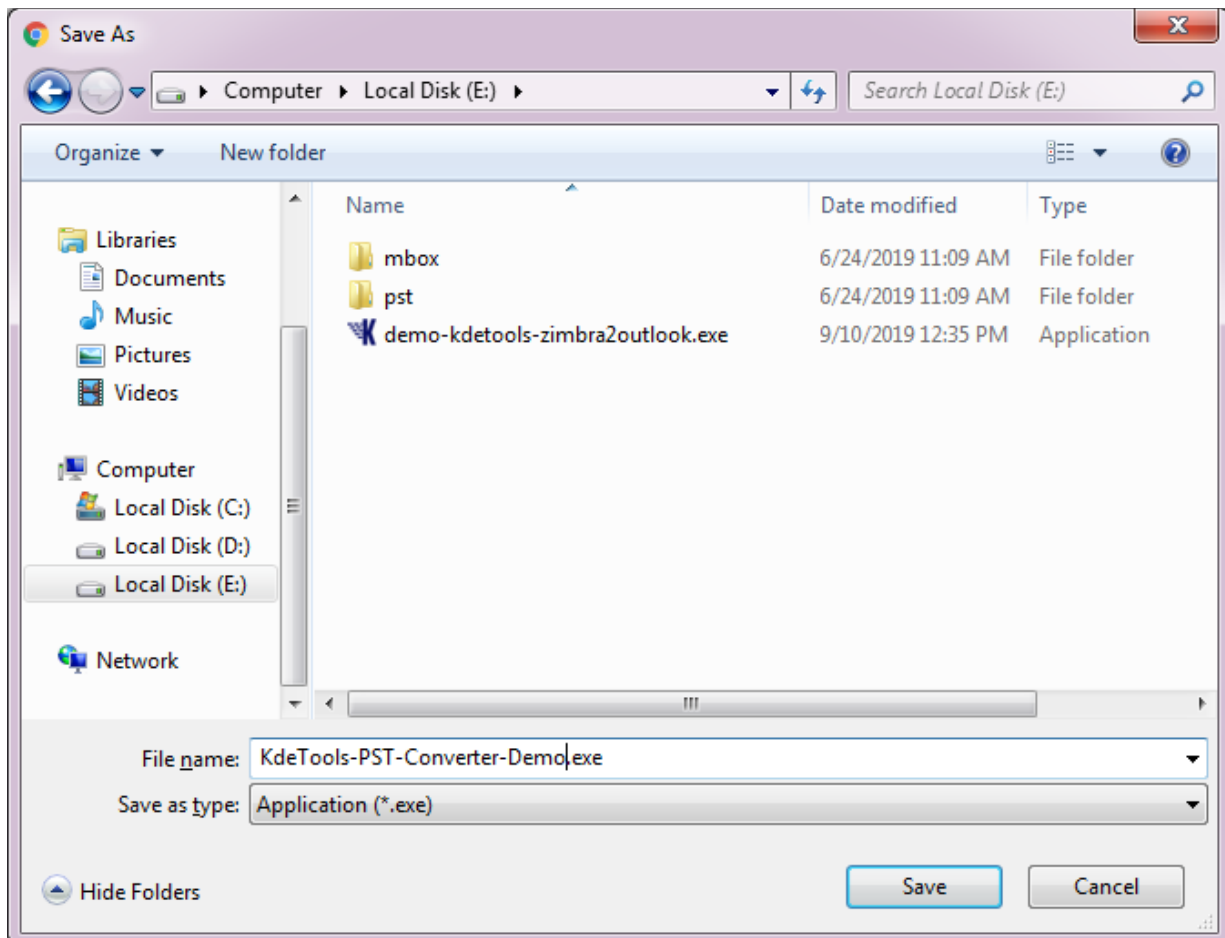


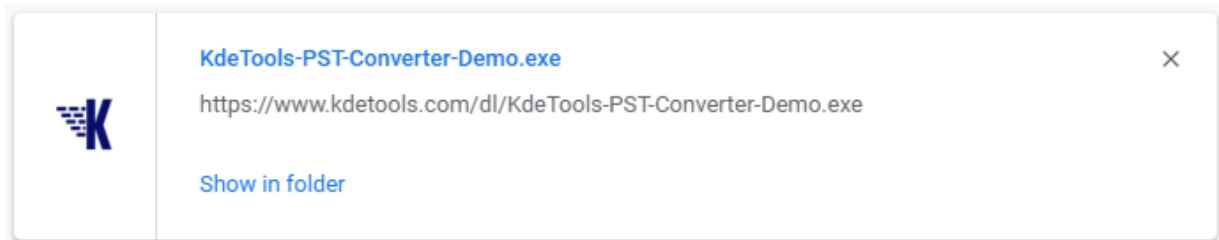
# KDETools Outlook PST Converter

## Step to Install

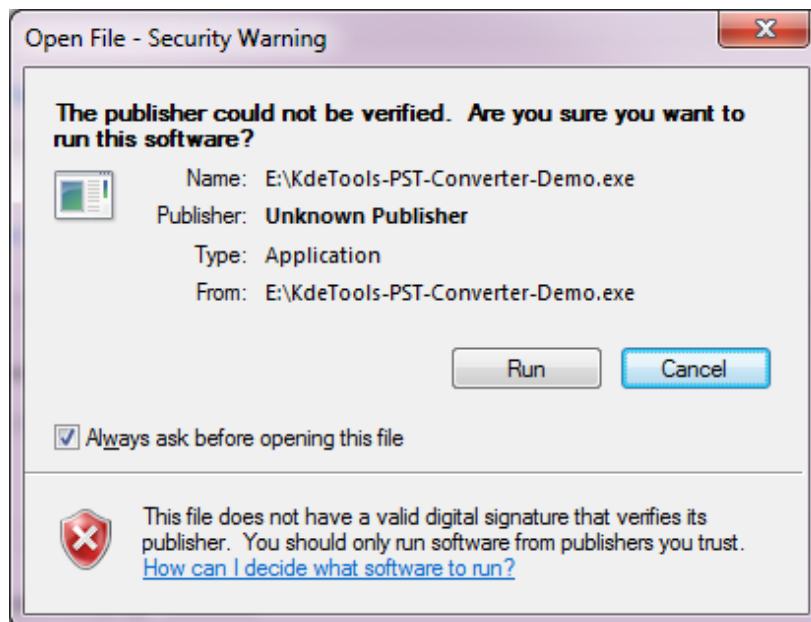
1. When Opening Dialog Box Appears Click **Save File**.



2. When Downloads Windows appears open a file in a **folder**.



4. When Security Warning Dialog Box Appears, **Click Run**.



## System Requirements:

**Support:** Windows 10, 8.1, 8, 7 & all below Windows version

**Processor:** Intel® Pentium 1 GHz processor(x86, x64) or equivalent

**RAM:** 2GB of RAM is recommended

**Hard Disk Space:** Minimum 100 MB for installation is required