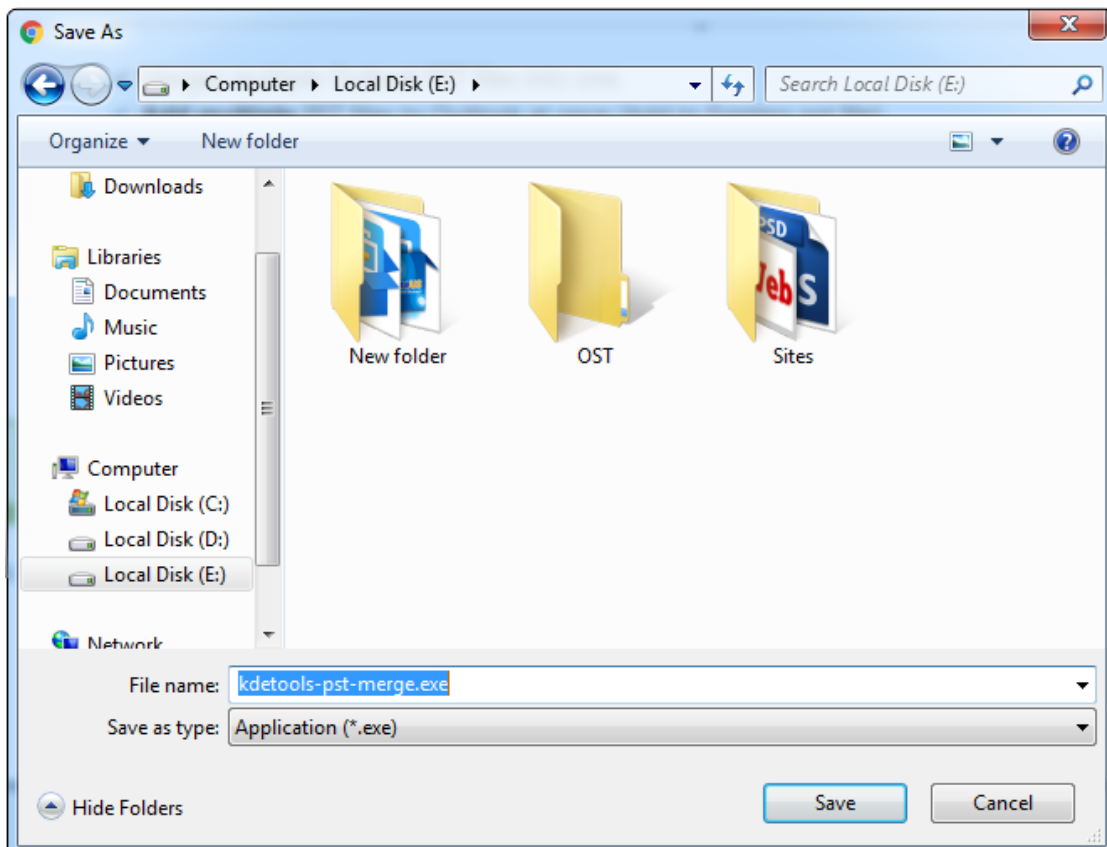


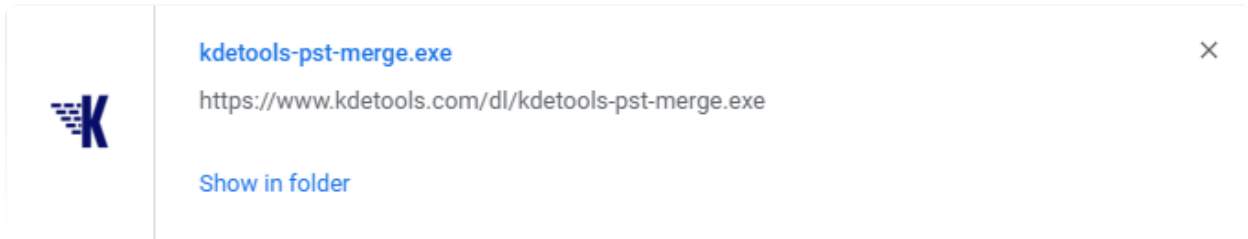
## KDETools PST Merge

### Step to Install

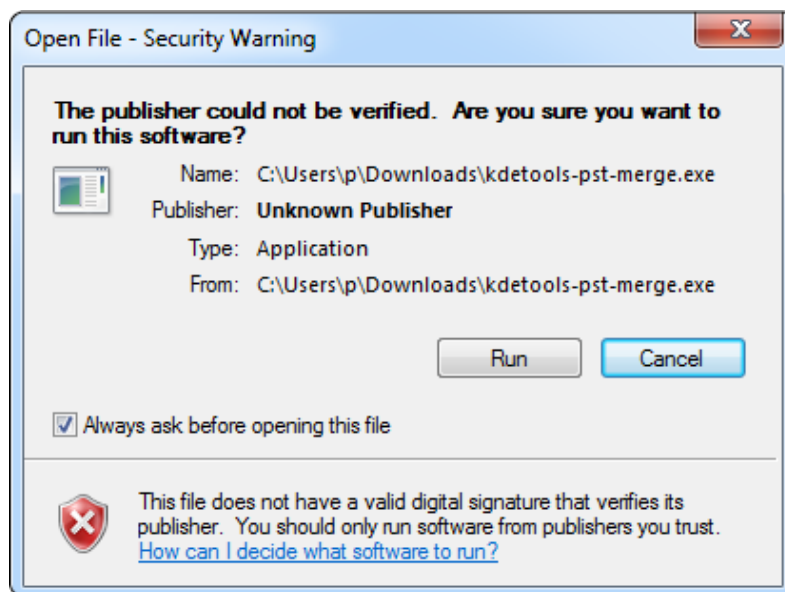
1. When Opening Dialog Box Appears Click **Save File**.



2. When Downloads Windows Appears open a file in a **folder**.



4. When Security Warning Dialog Box Appears, **Click Run**.



### System Requirements:

<b>Support</b>	:	Windows 2000, 2003, 2008, XP, Vista, Windows 7/8/8.1, 2008/2012, Windows 10 (32-bit & 64-bit)
<b>Processor</b>	:	1 GHz processor (2.4 GHz is recommended)
<b>RAM</b>	:	500 MB of RAM (1 GB is recommended)
<b>Hard Disk Space</b>	:	Minimum 100 MB for installation is required