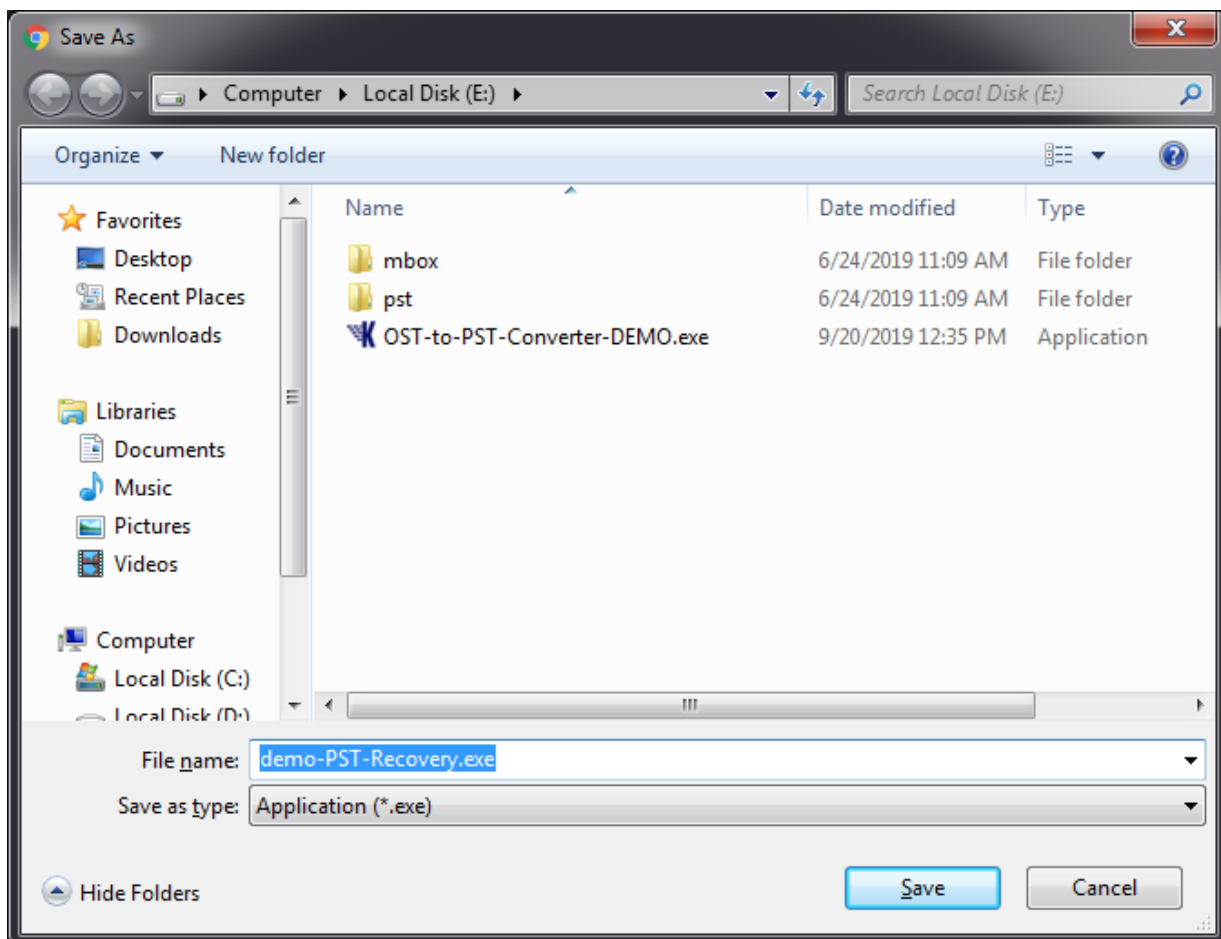




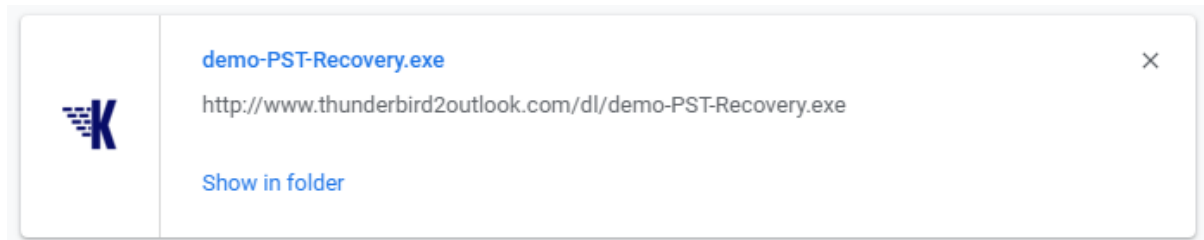
## KDETools PST Recovery Tool

### Step to Install

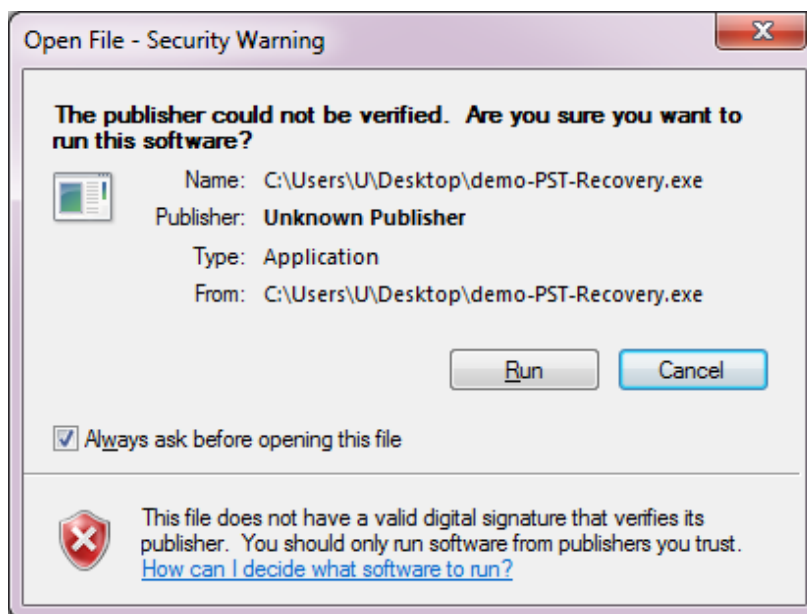
1. Click on “Save” to download the software in your system.



2. Download window shows an open a file in a folder.



3. Click on Run option in the Security warning box



## System Requirements

- ✓ **Support** Windows 10, 8.1, 8, 7 & all past windows versions
- ✓ **Processor** Intel Pentium 1 GHz Processor (x84, x64) or equivalent
- ✓ **RAM** Suitable for 2 GB RAM
- ✓ **Hard Disk Space** 100 MB is required for installation